



DOVER MARINA HOTEL & SPA

TAPESTRY
COLLECTION
by Hilton™



CONFERENCES & EVENTS

Dover Marina Hotel & Spa



Waterloo Crescent,
Dover, Kent, CT17 9BP

HOST YOUR CONFERENCE WITH IMPACT

Positioned on the shores of the English Channel, Dover Marina Hotel & Spa combines a coastal setting with professional sophistication, creating a distinctive setting for conferences, corporate meetings, and events.

The versatile meeting spaces accommodate gatherings from small board meetings to conferences of up to 200 delegates, supported by modern AV facilities, high-speed Wi-Fi, and inspiring sea views.

After a productive day, delegates can unwind in one of our 122 stylish bedrooms, enjoy dining at our onsite restaurant, or relax at the Waterfront Spa & Health Club.

With experienced event coordinators and exceptional hospitality, Dover Marina Hotel & Spa provides the perfect setting for business by the sea.

200
DELEGATES

122
BEDROOMS

3
MEETING ROOMS

4*
HOTEL



Winston Hall - our flagship conference room

WHERE BUSINESS MEETS THE SEA



Located on Dover's historic seafront, Dover Marina Hotel & Spa offers a unique coastal setting with excellent transport connections for both business and leisure travellers.

The hotel is easily accessible via the A2 and A20, providing direct links to London and the national motorway network. Dover Priory railway station is just a short distance away, with regular high-speed services connecting to London St Pancras in around one hour.

Positioned close to the Port of Dover and the Channel Tunnel, the hotel is ideally placed for international travel and European connections, making it a convenient meeting point for UK and overseas delegates.

With its central location, delegates can also explore Dover's historic landmarks, including Dover Castle and the famous White Cliffs, all within easy reach of the hotel.

LOCATION HIGHLIGHTS

- Seafront location overlooking the English Channel
- 5 minutes from Dover Priory railway station
- High-speed trains to London St Pancras (approx. 1 hour)
- Easy access via the A2 and A20, with on-site parking available
- Close to the Port of Dover and Channel Tunnel
- Convenient for UK and international delegates
- Easy taxi access and shuttle bus options available for larger groups
- Concierge services including luggage storage for delegates
- Near Dover Castle and the White Cliffs

Contact our Events Team for a proposal:

events@dovermarinahotel.co.uk | +44 1304 203633 | dovermarinahotel.co.uk

DELEGATE EXPERIENCES



DAILY DELEGATE PACKAGE

From £45 per person

Minimum 8 delegates

A complete meeting solution designed for efficiency and comfort.

Includes:

- Meeting room hire (up to 8 hours)
- Arrival refreshments
- Mid-morning and afternoon breaks
- Working lunch selection
- Unlimited tea & coffee
- Notepads, pens, and filtered water
- High-speed Wi-Fi & presentation screen

Enhance Your Experience

- Starbucks coffee upgrades
- Three-course dining at our onsite restaurant
- Spa access or treatment upgrades

24-HOUR DELEGATE PACKAGE

From £165 per person

Ideal for residential meetings, leadership retreats, and multi-day events.

Includes:

- Full-day meeting room hire
- Refreshment breaks throughout the day
- Buffet lunch
- Three-course dinner at our onsite restaurant
- Overnight accommodation
- Full English or Continental breakfast
- Complimentary Waterfront Spa access

A seamless blend of business productivity and coastal relaxation.



Contact our Events Team for a proposal:

events@dovermarinahotel.co.uk | +44 1304 203633 | dovermarinahotel.co.uk

VENUE HIGHLIGHTS

HOTEL:

- 122 guest bedrooms & suites
- Seafront location overlooking the English Channel
- Part of Tapestry Collection by Hilton

MEETINGS & EVENTS

- 3 flexible meeting spaces
- Up to 200 delegates theatre style
- Winston Hall – flagship conference space
- Blenheim & Chartwell Suites for smaller meetings
- Modern AV facilities and presentation screens
- High-speed Wi-Fi throughout

DINING

- Onsite restaurant
- Churchill Bar & Lounge
- Cafe serving Starbucks coffee
- Special dietary requirements and customised menus can be accommodated for all events

LEISURE FACILITIES

- Waterfront Spa & Health Club
- Gym, sauna, steam room & hot tub
- Vogue Hair & Beauty Salon

LOCATION

- Seafront location in the heart of Dover
- Close to Dover Priory station
- Easy access to A2 and A20
- Near the Port of Dover and Channel Tunnel

PARKING

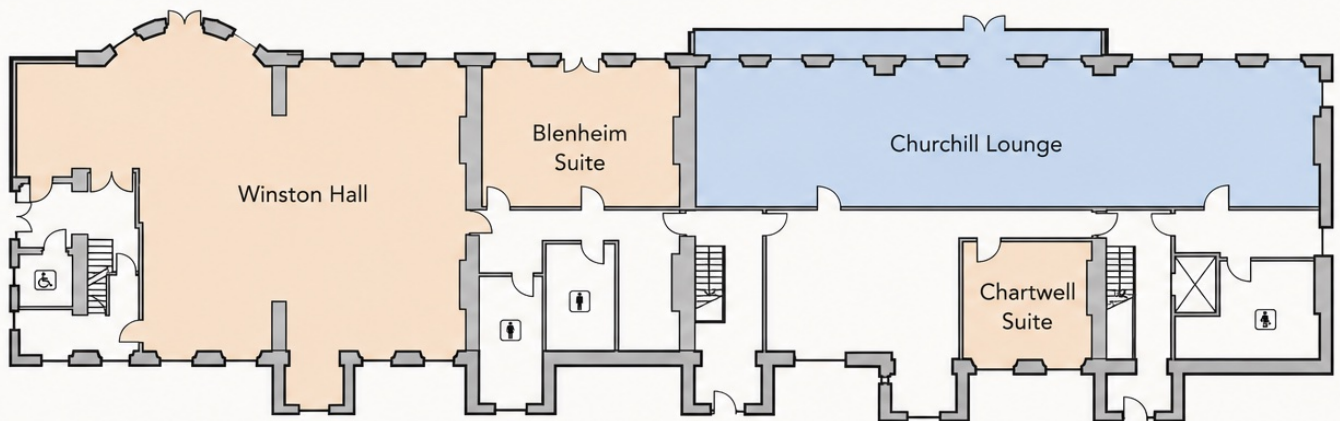
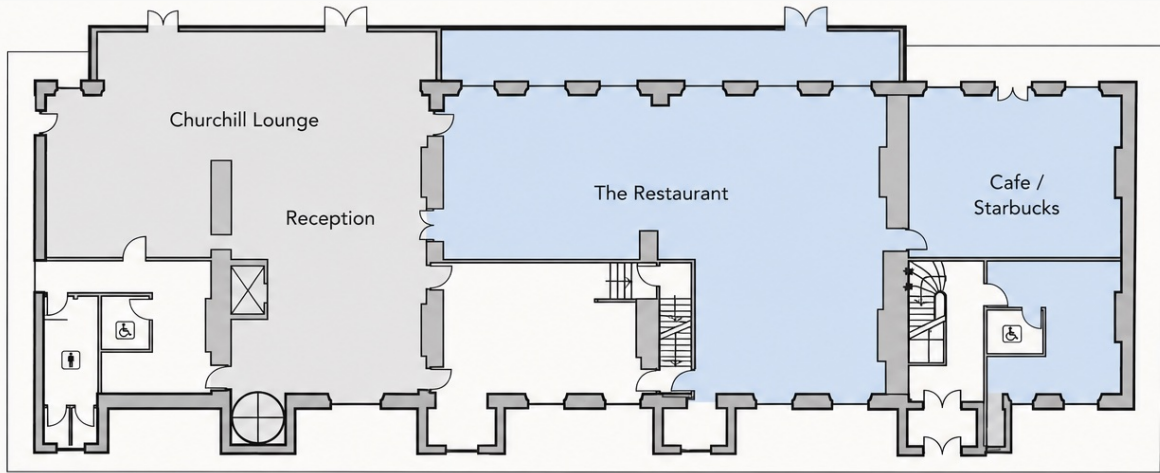
- Car parking available
- EV charging points within walking distance



Contact our Events Team for a proposal:

events@dovermarinahotel.co.uk | +44 1304 203633 | dovermarinahotel.co.uk

FLOOR PLANS



Meeting Spaces



Restrooms



Dining



Lounge/Networking

Contact our Events Team for a proposal:

events@dovermarinahotel.co.uk | +44 1304 203633 | dovermarinahotel.co.uk

MEETINGS & EVENTS

Dover Marina Hotel & Spa offers a professional and flexible environment for meetings, conferences, training days, and corporate events.

Our three versatile meeting spaces - Winston Hall, Blenheim Suite, and Chartwell Suite - accommodate gatherings from small executive meetings to conferences of up to 200 delegates.

Each space features natural daylight, modern AV technology, high-speed Wi-Fi, and flexible room layouts to support a wide range of event formats including board meetings, seminars, workshops, and corporate presentations.

Our experienced events team will work closely with you from planning through to delivery, ensuring every detail is managed seamlessly and your event runs smoothly from start to finish.

A TYPICAL CONFERENCE DAY AT DOVER MARINA

08:30

Organisers Arrive

Setup and final preparations for the day.

09:00

Delegates Arrival

Welcome drinks, coffee and freshly baked pastries.

09:30

Conference Sessions Begin

Presentations, seminars or workshops commence.

10:30

Morning Refreshment Break

Tea, coffee and light refreshments served.

13:00

Working Lunch

A relaxed lunch served for delegates.

15:00

Afternoon Refreshment Break

Coffee, tea and refreshments.

17:00

Meeting Concludes

Conference sessions finish for the day.

18:30

Evening Relaxation

Delegates check in to their rooms, enjoy dinner at our onsite restaurant, or unwind at the Waterfront Spa.

Contact our Events Team for a proposal:

events@dovermarinahotel.co.uk | +44 1304 203633 | dovermarinahotel.co.uk

MEETING SPACES

Flexible rooms designed to adapt to your event



WINSTON HALL

Our largest and most versatile space, ideal for conferences, presentations, and corporate dinners.

With elegant interiors and integrated AV, it is designed to deliver impact.

BLENHEIM SUITE

A bright, adaptable suite perfect for training sessions, workshops, and mid-sized meetings.

Professional, comfortable, and easy to configure.



CHARTWELL SUITE

An intimate setting suited to board meetings, interviews, and focused discussions.

Private, refined, and executive in feel.



EXECUTIVE DINING & NETWORKING

ONSITE RESTAURANT

Ideal for business lunches, networking dinners and private corporate dining.

Restaurant
60 guests

Conservatory
22 guests



ROOM	THEATRE STYLE	BOARDROOM STYLE	CABARET	LENGTH	WIDTH	HEIGHT
The Winston Hall	200	100	160	14m	19.4m	3m
Blenheim	40	20	20	6.7m	4m	3m
Chartwell	20	12	10	4m	4m	3m

OUR ROOMS

After a productive day, retreat to one of our 122 stylish guest bedrooms and suites, many offering views across the English Channel.

Designed with comfort and convenience in mind, our rooms provide a relaxing space to unwind or prepare for the day ahead.

Whether staying for a single night or a multi-day event, our accommodation ensures a comfortable and restful experience.



DELEGATES CAN ENJOY

- Complimentary high-speed Wi-Fi
- Comfortable work desk and seating area
- Tea and coffee-making facilities
- In-room safe
- 24-hour room service
- Executive rooms and suites available

Contact our Events Team for a proposal:

events@dovermarinahotel.co.uk | +44 1304 203633 | dovermarinahotel.co.uk

OUR FACILITIES

Exceptional dining plays an important role in every successful event



ONSITE RESTAURANT

Classic British dining in an elegant setting, ideal for client dinners and group bookings.

CAFE WITH STARBUCKS

Perfect for a quick refreshment between sessions.



CHURCHILL BAR & LOUNGE

A stylish space for informal meetings, coffee breaks, and evening networking over cocktails.

Whether hosting a formal dinner or relaxed networking drinks, our dining venues offer something to suit every occasion.



Contact our Events Team for a proposal:

events@dovermarinahotel.co.uk | +44 1304 203633 | dovermarinahotel.co.uk



Dover Marina Hotel & Spa offers more than just meeting space. Delegates can enjoy a range of on-site facilities designed to enhance their stay.

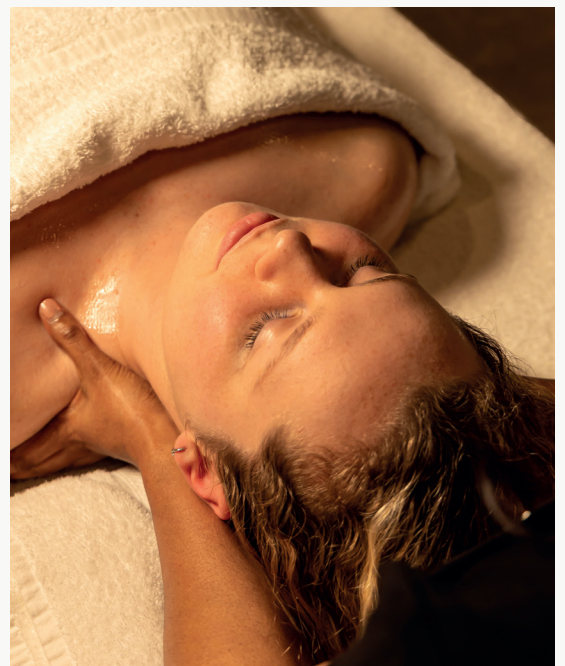
WATERFRONT SPA & HEALTH CLUB

- Fully equipped gym
- Sauna, steam room & hot tub
- Relaxation areas
- Treatment rooms (spa treatments available)

VOGUE AT THE MARINA

- Professional hair & beauty services
- Ideal for pre-event preparation

From business to wellbeing, everything is under one roof.





TAPESTRY
COLLECTION
by Hilton™

If you would like to discuss your event,
our events team will be happy to build
a tailored proposal for you.

Events Team

Dover Marina Hotel & Spa
Waterloo Crescent, Dover, Kent CT17 9BP

T: +44 1304 203633

E: events@dovermarinahotel.co.uk

W: dovermarinahotel.co.uk

TERMS & CONDITIONS

A 10% non-refundable deposit is required to confirm bookings. Final balance is due 14 days prior to the event unless credit facilities have been agreed. Cancellation charges apply based on notice period. Full details available upon request. Prices and details are correct on 1 June 2026 at time of printing and subject to change.